



# The White Plague

By Karel Čapek

A site-specific performance at  
Turbine Hall, Tate Modern, London

Designed by Cheng Keng | Deepanjali | Ingerid Gullerud | Jamie Lu | Orange Zhu





*The audience enters the Turbine Hall at Tate Modern, London.*

*Performers are queueing at both sides of the slope.  
Propaganda visuals are projected on the side walls*

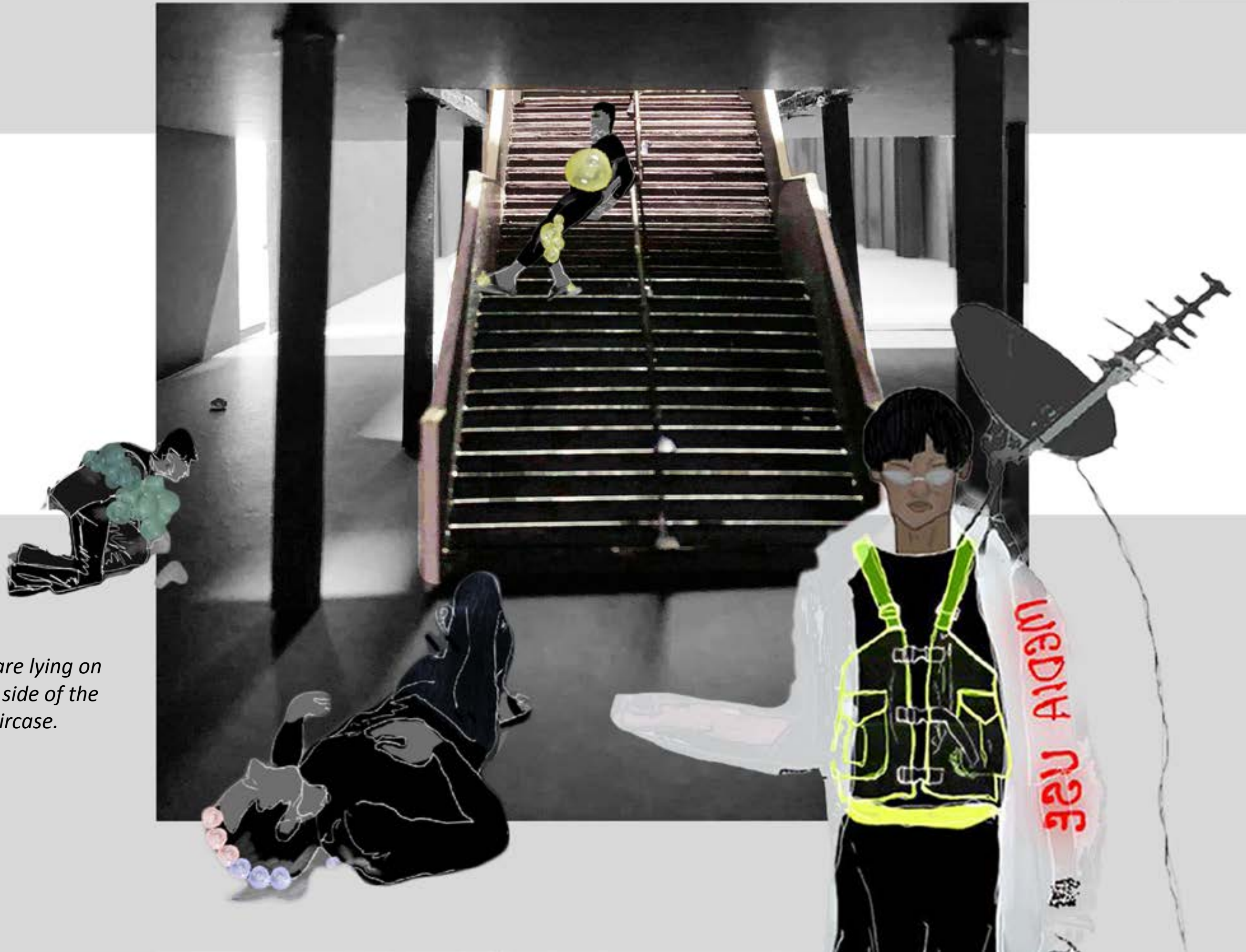
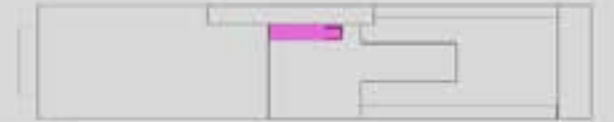
*Journalist is handing out headphones and mobile  
devices to the audience.*

*(See the video at: 0:00-0:29)*





*Journalist introduces the performance to the audience and guides them upstairs to the bridge.*



*Lepers are lying on the left side of the staircase.*

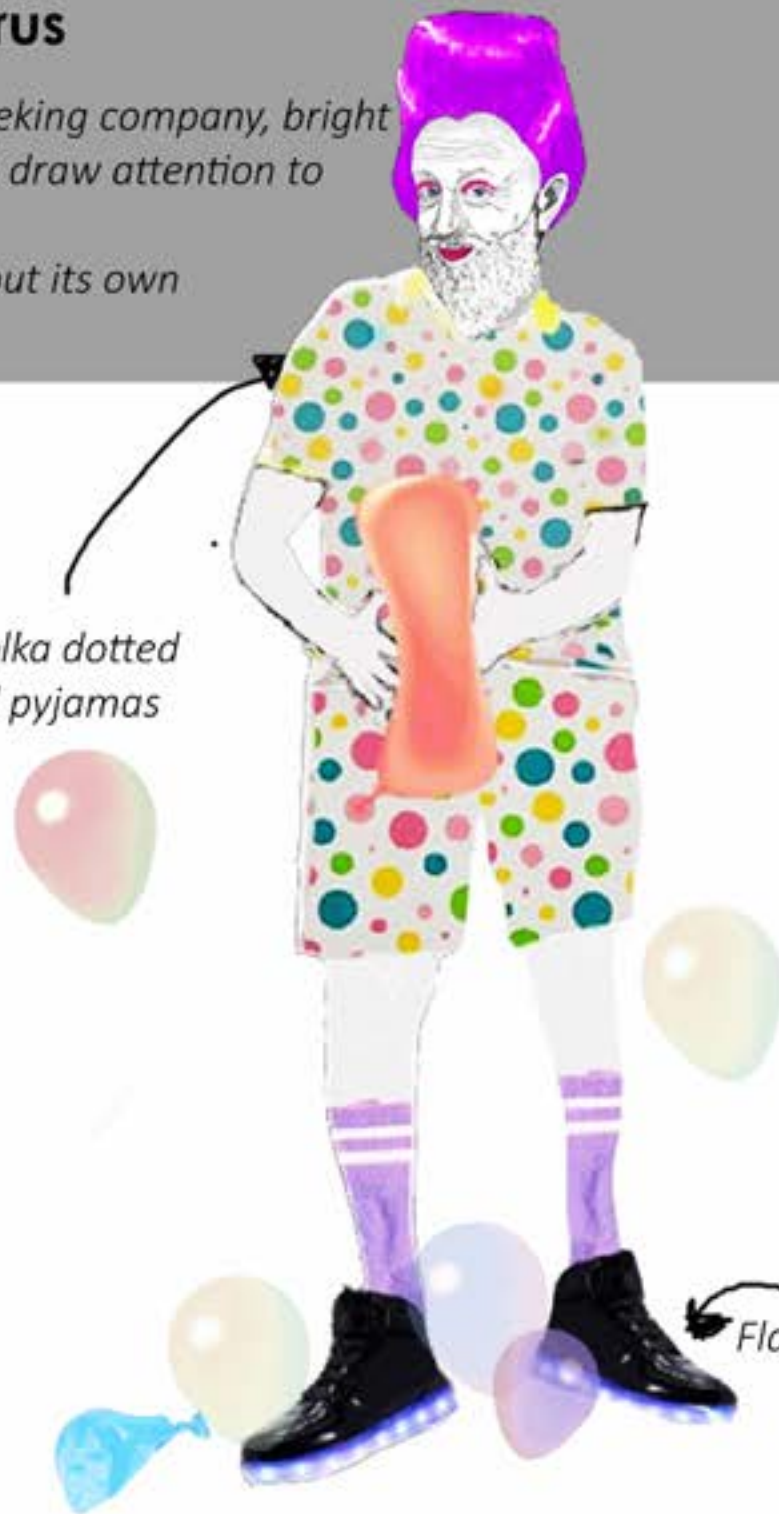


# Virus and Patients

## The Virus

*Playful seeking company, bright colours to draw attention to itself  
Naive about its own danger*

*Cotton polka dotted tshirt and pyjamas*



*White painted face*

*Pink eyeshadow*



*Symptoms - Balloon inflated with powder on the body*

## The Patients

*Patients infected on different parts of the body*



*The audience are being guided to the audience area,  
where they can stand on the glass platform, or turn  
right to have a seat on the bridge.*





# Lilienthal

## Galen 1

Reformed military costume when he first enters Lilienthal and wears it back when he leaves Lilienthal

### Assistant

Deflated balloon (anti virus) hope for his patients reformed his achievement into neckpiece

## Galen 2

While working at Lilienthal

## Sigelius

Oversized coat and trousers

Oversized stethoscope

Hospital tools waist bag

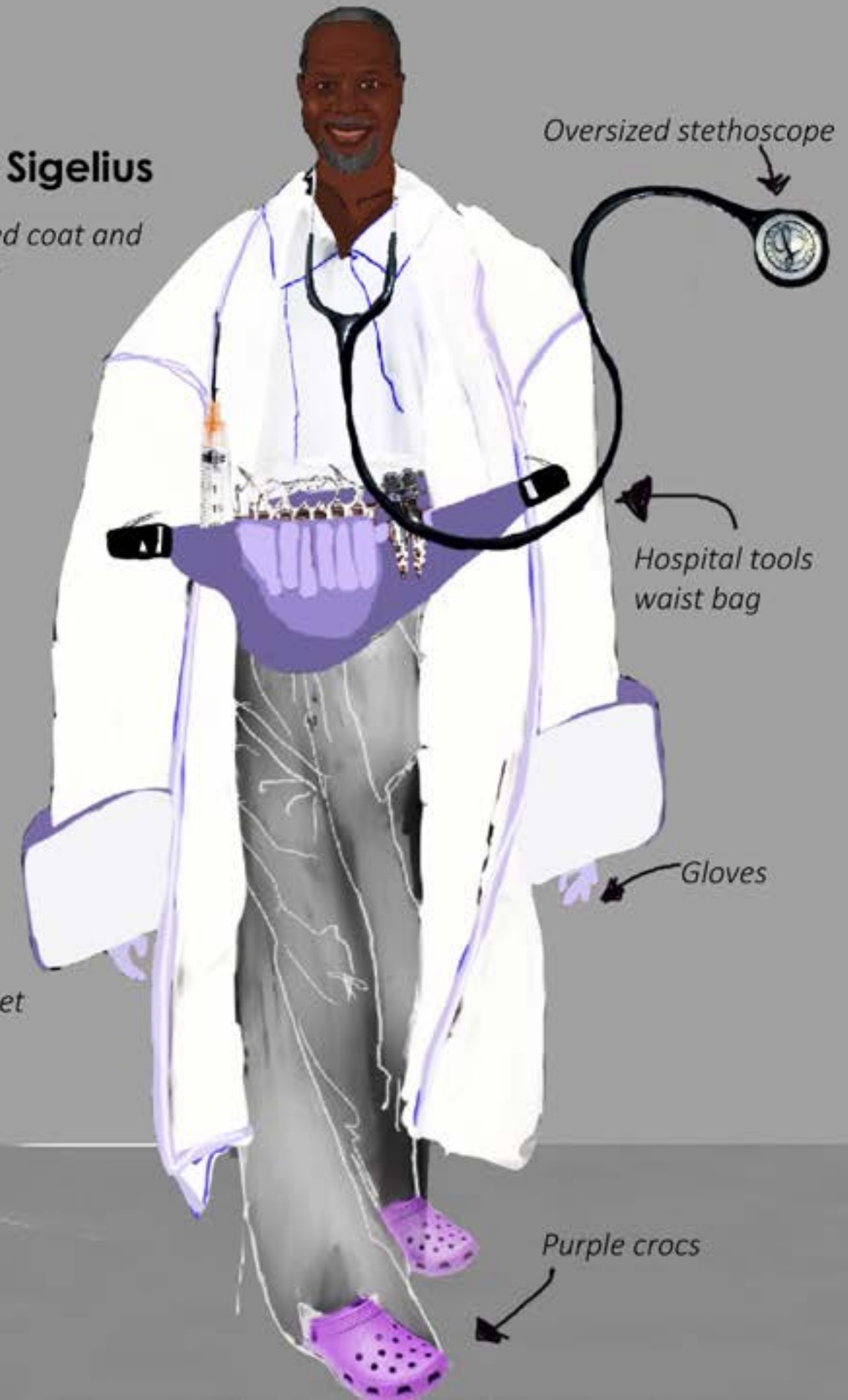
Gloves

Purple crocs

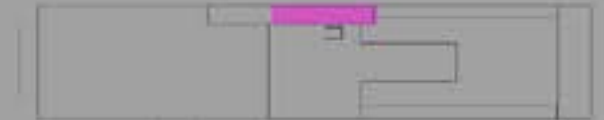
Mustard drink "the cure"

Vinyl jacket

Shades of neon same as military



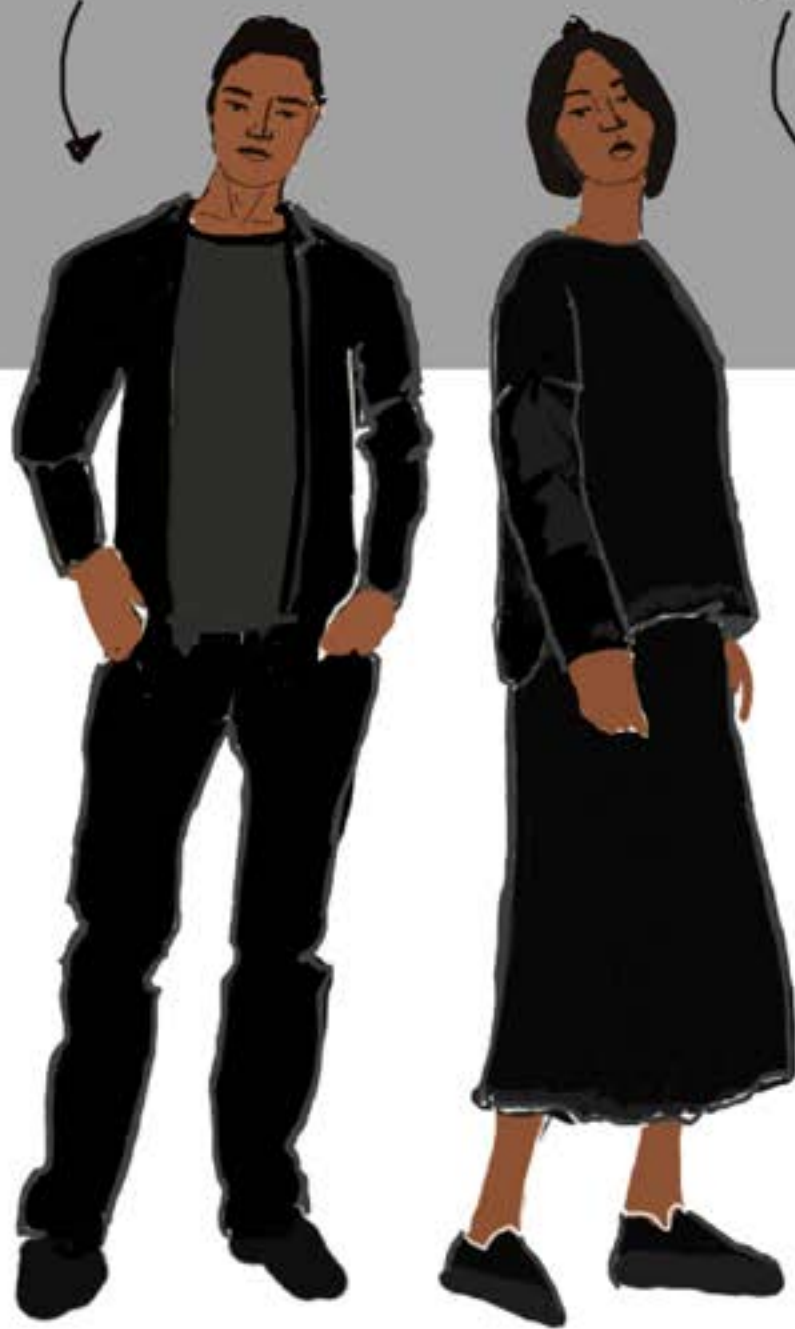
*Galen enters from the bank side entrance while Sigelius is being interviewed by the journalist through intercom. (Video Cue 1)*





# Family and Krug Corporation workers

Job seekers queueing in line



Son and Daughter

Oversized backpack with all the household utilities carrying the load of her family's needs



Mother

Father 2

Head of Accounts  
higher level of the balcony



Lower position placed  
on lower level of the balcony



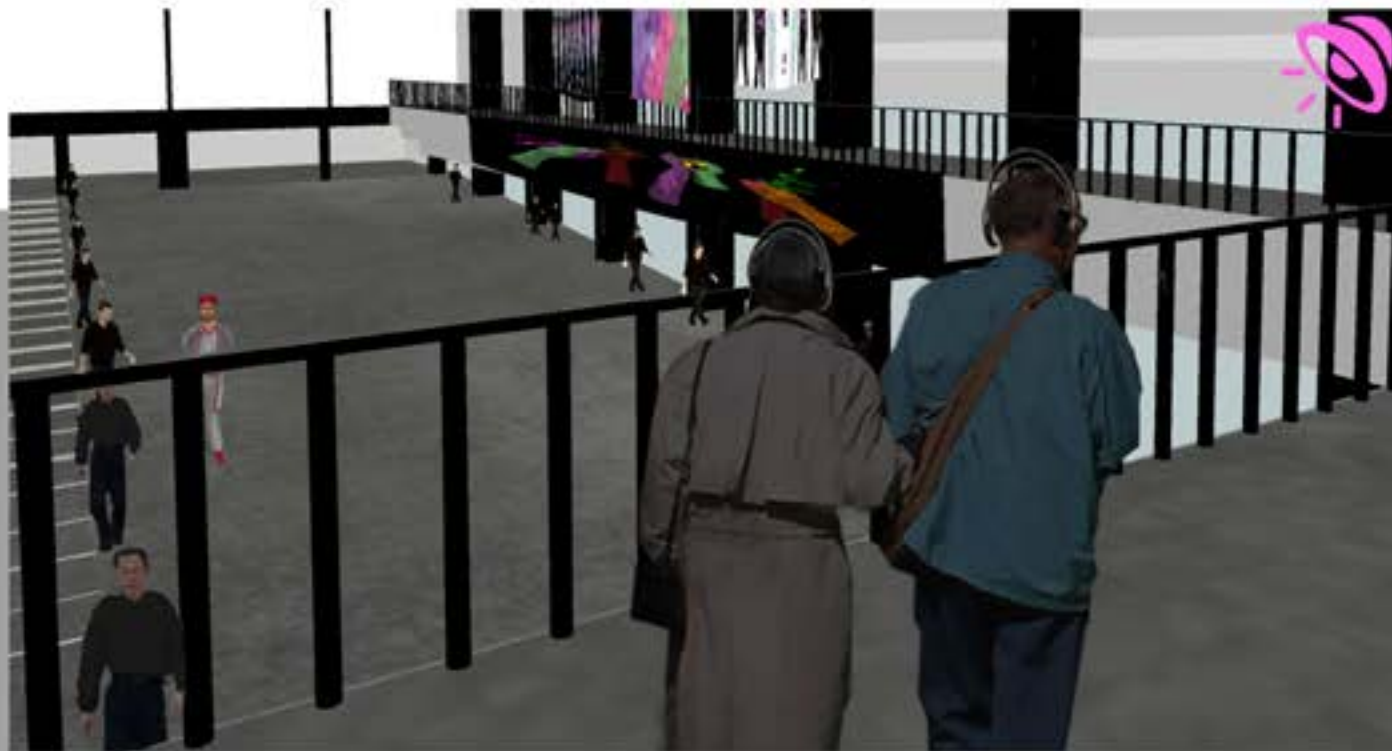
Factory workers

Neon shades cap  
and gloves to  
enhance visibility,  
safety measures

Father 1

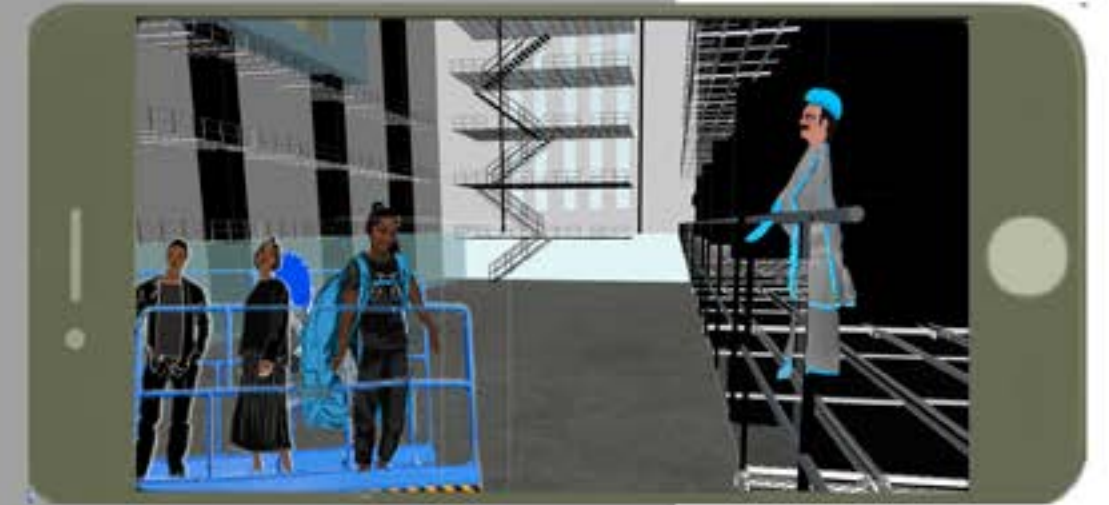






(Audio Cue 6)

*After the signal sound, people queueing at the entrance side start to move towards the working space.*



*People are taking the lift up to visit their family member working at Krug's factory. one of them being livestreamed on audience devices. (Video Cue 2)*





*Marshal arrives at Lilienthal hospital by the ski lift.  
(See the video at: 0:54-1:15)*



*(Audio Cue 7)*

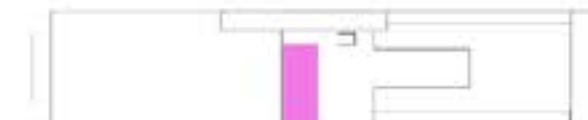




# Marshal and Army



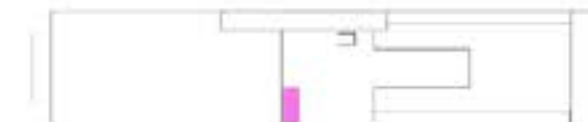




*Sigelius orders Galen to leave and Galen takes off his Lilienthal costume.*







*The father and the mother are queueing outside Galen's clinic.*







*Baron arrives at Sigelius' office via ski lift.*

*(See the video at: 1:15-1:33)*



*The virus is following Baron to Marshal's office.*



# Krug Corporation

## Annette

Bow wraps her up like a present to be received by Jr krug.



## Junior Krug 1

First Junior has a position at Krug Corporation and takes his father's position before his father's death



## Junior Krug 2

Head of Krug Corporation after his Father's (Baron) death



## Baron Krug 1

Shiny, colourful, enlarged Suit and tie. flaunting his position of power before he gets infected



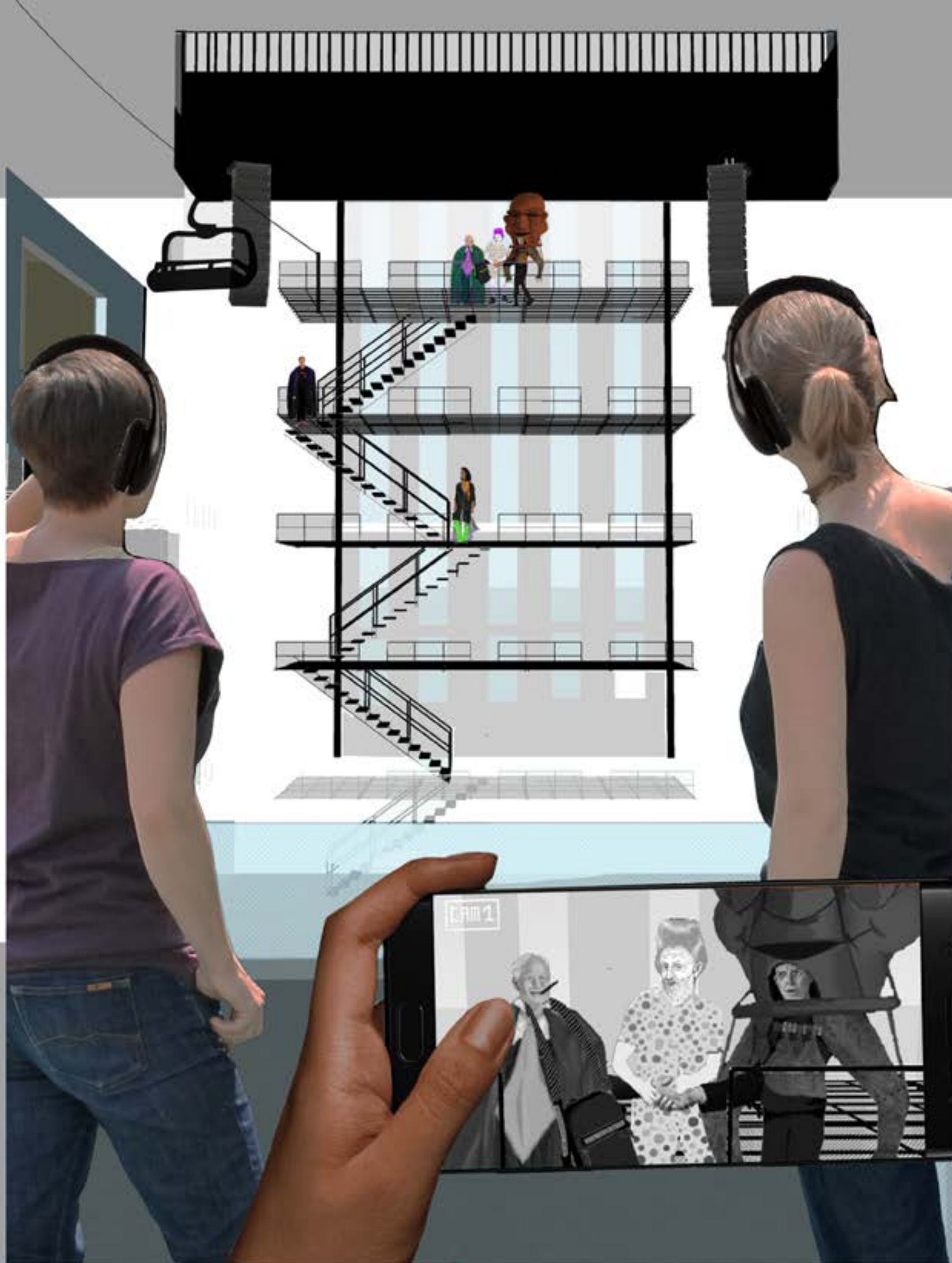
## Baron Krug 2

Baron before his death hands over his position to his son



Virus - Powder on the shirt





*Marshal and Baron are shaking hands while  
Galen is approaching Marshal's office.*

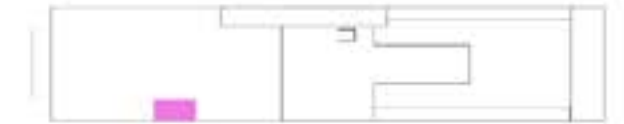
*(Video Cue 7.1)*



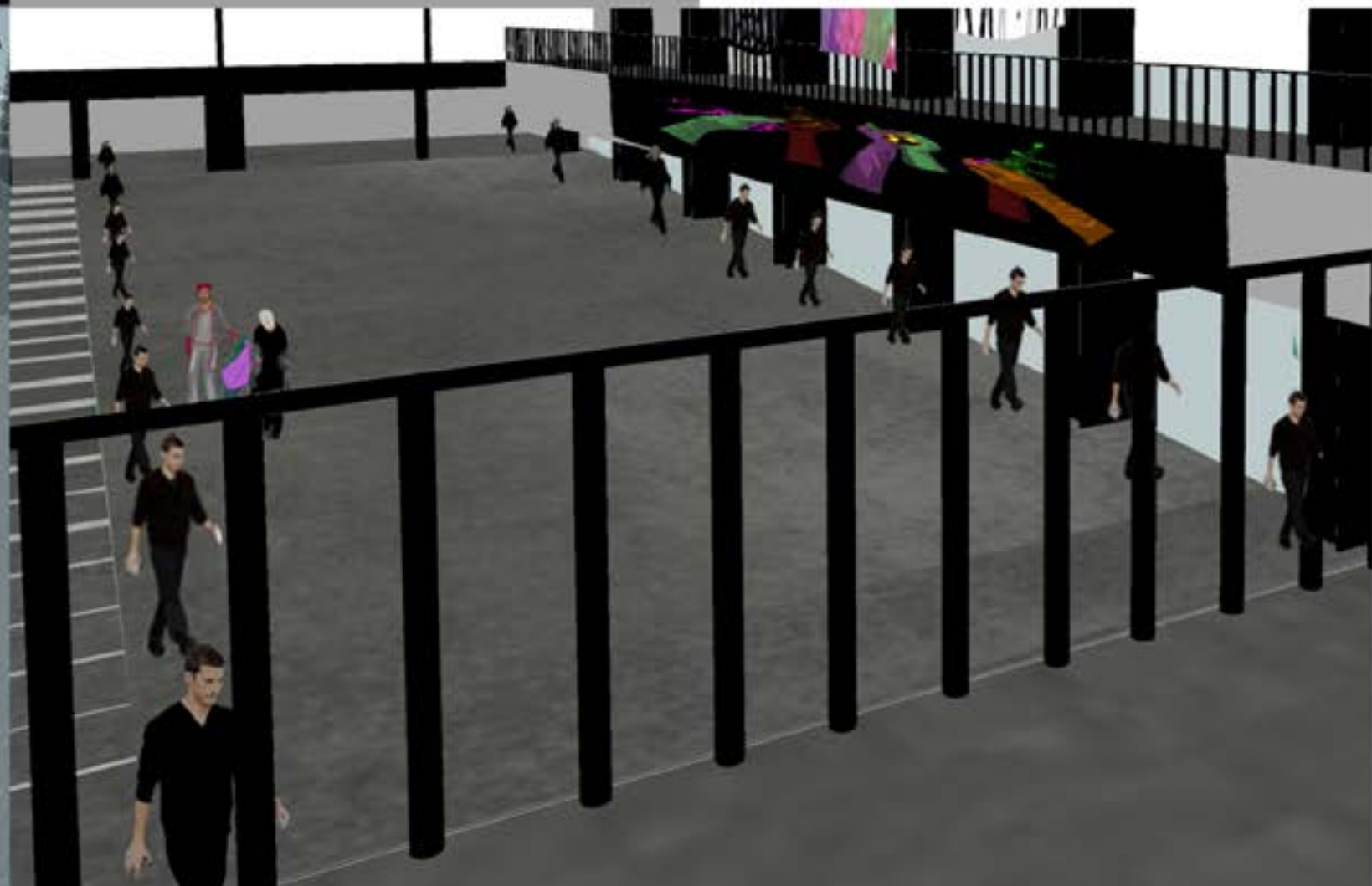


(Audio cue 17)

*Baron leaves Marshal's office and goes underneath the bridge, reappearing at the slope side of the hall to pass his costume over to Jr Krug.*



*"five minutes ago Baron Krug shot himself."  
(Video Cue 7.2)*



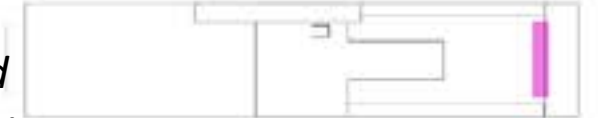




(Audio cue 18)

*A huge sheet of fabric drops down. Marshal's speech is being projected on it. The virus pops the balloon to infect Marshal with the virus.*

*Marshal is talking to Annette and Jr Krug. The projection is being cut and the conversation is livestreamed on audience's device.*



(Audio Cue 20)

(See the video at: 1:33-2:35)







(Audio Cue 22)



*The signal comes back. The camera is facing the audience. Galen is killed by the crowd and the cure is smashed.*





*The projection screen falls down when the cure is smashed.  
The Performers start to take off their costumes.*



*(Audio Cue 23)  
"The Performance is now over, please return  
your mobile device on your way out."*



*Performers mix with the audience  
and leave the space.*